



# BRENT INTERNATIONAL SCHOOL MANILA

## UPPER SCHOOL PROFILE 2018-2019

### LEADERSHIPS

**Mr. Jason J. Atkins**  
Headmaster  
headmaster@brent.edu.ph

**Ms. Sonia Bustamante**  
Upper School Principal  
upperschoolprincipal@brent.edu.ph

**Mr. Todd Wyks**  
Assistant Upper School Principal  
assistantprincipal@brent.edu.ph

**Ms. Maria Cristina R. Pozon**  
International Baccalaureate Program Coordinator  
ib@brent.edu.ph

### COUNSELORS

**Ms. Genevieve Dubroof** (Gr. 9-10)  
9-10guidance@brent.edu.ph

**Mrs. Katelyn Regan** (Gr. 11-12 A-K)  
akusguidance@brent.edu.ph

**Mrs. Yuko Spachuk** (Gr. 11-12 L-Z)  
lzusguidance@brent.edu.ph



COLLEGE BOARD CODE: 705450  
IB SCHOOL CODE: 000432

### ADDRESS:

Brentville Subdivision,  
Barangay Mamplasan,  
Biñan, Laguna 4024,  
Philippines

### TELEPHONE:

+63(49) 5134330 to 33  
+63(2) 779-5140  
Ext. 311 & 312  
Fax: +63(49) 513-4356

### WEBSITE:

www.brent.edu.ph

### AT A GLANCE

- 100+ years of Brent Pride
- International Baccalaureate (IB) Diploma
- American-based curriculum
- 40+ nationalities of students
- Nursery to Grade 12
- Matriculation to excellent universities
- 1,000 enrolled students
- Episcopal / Anglican traditions
- 100+ after-school activities
- Clean air in Biñan, Laguna
- Student-centered, caring community

### MISSION STATEMENT

"Brent schools, in a Christian ecumenical environment in the Philippines, are committed to develop individual students as responsible global citizens and leaders in their respective communities, with a multicultural and international perspective, and equipped for entry to colleges and universities throughout the world."

### HISTORY

- Founded in 1984
- An international, co-educational, day school
- Affiliated with the Episcopal Church of the Philippines

### EXPECTED SCHOOL-WIDE LEARNING RESULTS (ESLRs)

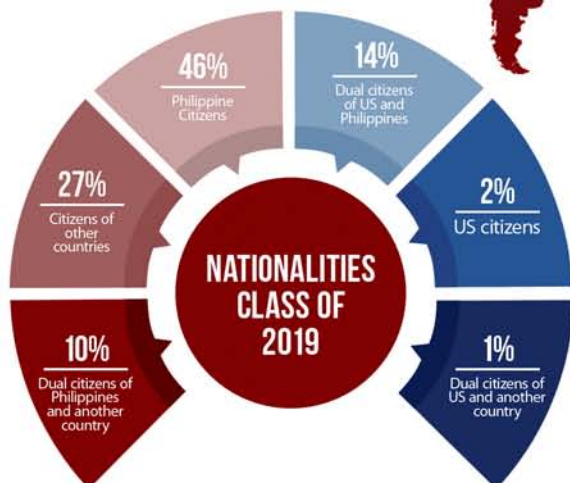
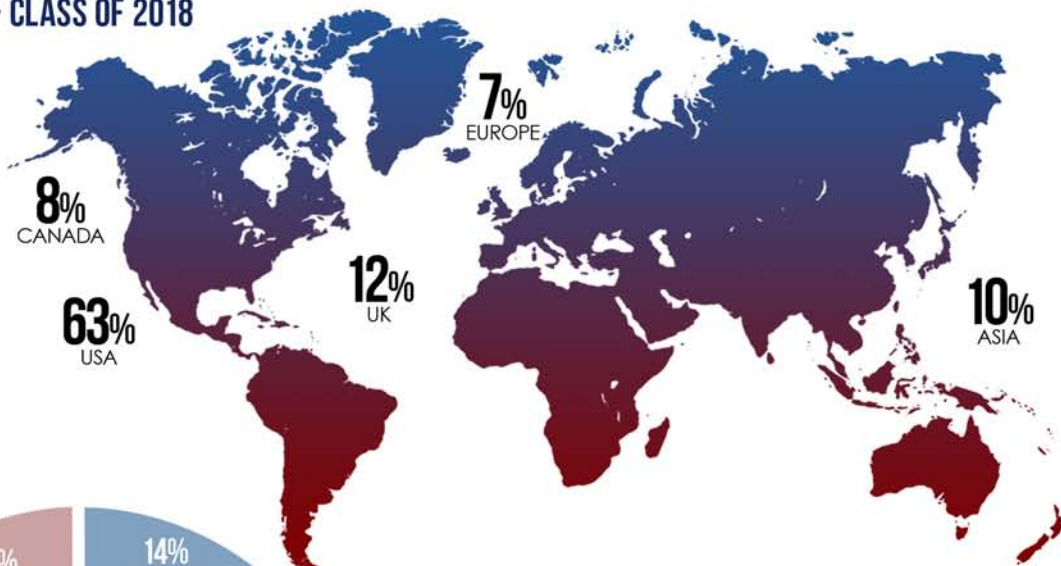
are foundational concepts of the established Brent curriculum and are embedded into each subject at every grade level.

- Responsible citizens • Critical thinkers
- Technologically literate • Healthy individuals
- Tolerant individuals
- Effective communicators • Life-long learners

### SCHOOL CALENDAR

The school year has two semesters with a total of 180 school days. We have an eight-period rotating block schedule where four periods meet each day for 85 minutes.

### MATRICULATION - CLASS OF 2018



### ENTIRE SCHOOL

**1033** students from nursery through grade 12  
**42** nationalities school-wide

### HIGH SCHOOL

**408** high school students  
**27** nationalities in high school  
**43** high school teaching professionals

### CLASS OF 2019

**116** students in the senior class  
**15** nationalities



# UPPER SCHOOL

## COURSE OFFERINGS

(Grades 9 - 12)

### GRADE 9 CURRICULUM

#### CORE SUBJECTS

English	English 9
Mathematics	Geometry or Advanced Geometry
Science	Life Science (Biology) and the Environment
Social Science	History (semester), and Physical Geography (semester)

#### LANGUAGE OPTIONS (students choose one Language)

Chinese	
French	
Spanish	
Filipino	(native speakers only)
Korean	(native speakers only)

#### VISUAL AND PERFORMING ARTS

Art (semester) and Music (semester), or  
Foundations of Art (one year), or  
Band (one year), or  
Choir (one year), or  
Strings (one year), or  
Dance (one year)

#### COMPUTER AND RELIGIOUS STUDIES

Computer Studies (one semester) and  
Religious Studies (one semester)

#### HEALTH AND PHYSICAL EDUCATION

(one year course)

### GRADE 10 CURRICULUM

#### CORE SUBJECTS

English	Advanced Literature, Literature
Mathematics	Algebra 2 or Advanced Algebra 2
Science	Chemistry / Physics (semester) or Advanced Chemistry / Physics (semester)
Social Science	History (semester), and Human Geography (semester)

#### LANGUAGE OPTIONS

Chinese	(students choose one Language)
French	
Spanish	
Filipino	(native speakers only)
Korean	(native speakers only)

#### VISUAL AND PERFORMING ARTS

Art (semester) and Music (semester), or  
Foundations of Art (one year), or  
Band (one year), or  
Choir (one year), or  
Strings (one year), or  
Dance (one year)

#### COMPUTER AND RELIGIOUS STUDIES

Computer Studies or  
Computer Programming  
(one semester) and  
Religious Studies (one semester)

#### HEALTH AND PHYSICAL EDUCATION

(one year course)

### GRADE 11 AND 12 CURRICULUM

All students in Grades 11 and 12 take at least six classes, one course from each of the groups listed. In addition, they take Junior Seminar in the first semester of Grade 11 and Theory of Knowledge (TOK) in the second semester of Grade 11 and first semester of Grade 12. They also are to participate in after school activities/clubs and community service outreach at least once a semester. Successful completion of these courses and requirements over the last two years of study qualifies a student for one of two different Brent School diplomas (Brent Diploma or Brent Honors Diploma).

Students take at least one course from each of the following groups

#### LANGUAGE A

IB English A Lit. (SL and HL)  
IB English A Lang. Lit. (SL and HL)  
IB Filipino A (SL and HL)  
IB Korean A (SL and HL)  
English 11 and 12 (non-IB)

#### LANGUAGE B

IB Chinese Ab Initio SL  
IB Chinese B (SL and HL)  
IB French Ab Initio SL  
IB French B (SL and HL)  
IB Spanish B (SL and HL)  
IB Spanish Ab Initio SL  
Beginner French (non-IB)  
Beginner Chinese (non-IB)  
Beginner Spanish (non-IB)

#### SOCIAL SCIENCE

IB Business Management (SL and HL)  
IB Economics (SL and HL)  
IB Geography (SL and HL)  
IB History (SL and HL)  
IB Psychology (HL and SL)  
IB Information Technology in a Global Society (SL and HL)  
Business Management 11 and 12 (non-IB)  
Economics 11 and 12 (non-IB)  
Geography 11 and 12 (non-IB)  
History 11 and 12 (non-IB)  
Information Technology in a Global Society 11 and 12 (non-IB)  
Psychology 11 and 12 (non-IB)  
Economics/Business 11 and 12 (non-IB)

#### SCIENCE

IB Biology (SL and HL)  
IB Chemistry (SL and HL)  
IB Computer Science (SL and HL)  
IB Physics (SL and HL)  
IB Sports, Exercise, and Health Science (SL)  
Biology 11 and 12 (non-IB)  
Chemistry 11 and 12 (non-IB)  
Computer Science 11 and 12 (non-IB)  
Physics 11 and 12 (non-IB)  
Sports, Exercise and Health Science 11 and 12 (non-IB)

#### MATHEMATICS

IB Mathematics HL  
IB Mathematics SL  
IB Mathematical Studies SL  
Math 11 and 12 (non-IB)

#### ELECTIVES

IB Music (SL and HL)  
IB Theater (SL and HL)  
IB Visual Arts (SL and HL)  
Or other IB courses  
Another subject from groups 1-4  
Visual Arts 11 and 12 (non-IB)  
Theater 11 and 12 (non-IB)  
Band (non-IB)  
Choir (non-IB)  
Strings (non-IB)

## ACADEMICS

- Upper School curriculum prepares students for success in the International Baccalaureate Program
- The International Baccalaureate Program is available for all students in Grades 11 and 12
- Students rotate through a modified block schedule

## US GRADUATION REQUIREMENTS

SUBJECT	CREDIT	
English	4	To complete the High School Program, students are also required to take Religious and Computer Studies, Art, Music, Health, Physical Education and participate in Community Service.
Mathematics	4	
Social Science	4	
Science	4	
Foreign Language	3-4	
Electives	2-3	
Health and Physical Education	1	
Theory of Knowledge	1	
<b>TOTAL:</b>	<b>24</b>	

## GRADE POINT AVERAGE, GRADING SCALE AND RANKING

Brent does not provide the specific rank of our students. The cumulative GPA of our students reflects courses taken at Brent only and is reported on a weighted 4.00 scale. IB Higher Level courses are marked (HL) on transcripts and receive an additional weighting of .50.

A+ = 4.0	B+ = 3.3	C+ = 2.3	D+ = 1.3
A = 4.0	B = 3.0	C = 2.0	D = 1.0
A- = 3.7	B- = 2.7	C- = 1.7	D- = 0.7

## GPA DISTRIBUTION

GPA RANGE	CLASS OF 2018
4.00+	10
3.50 - 3.99	42
3.00 - 3.49	33
2.50 - 2.99	24
2.00 - 2.49	8
1.00 - 1.99	0

## HONORS AND AWARDS

Bishop Brent Scholar - 4.00 - above  
Headmaster's List - 3.99 - 3.50  
Honors List - 3.49 - 3.00

# INTERNATIONAL BACCALAUREATE PROGRAM MAY 2018

Approximately **75%** of Brent students are enrolled in the IB diploma program

**33**  
Brent Average

**44**  
Brent Highest Score

**92**  
IB Diploma Candidates

**86**  
IB Diploma Earners

## IB RESULTS SUMMARY (THE LAST FIVE YEARS)

CLASS YEAR	CLASS TOTAL	DIPLOMA CANDIDATES	DIPLOMA AWARDED	BRENT PASS RATE	IB PASS RATE	MEAN SCORES	HIGH	IB AVERAGE SCORES
2018	124	92	86	93%		29.78	44	33
2017	112	88	79	90%	79%	30	40	30
2016	93	64	52	80%	81%	30	40	30
2015	103	71	57	80%	81%	32	41	30
2014	95	75	66	88%	79%	32	44	30

## SAT/ACT TESTING

### REDESIGNED SAT RESULTS (56 STUDENTS TESTED)

SECTION	MIDDLE 50%	AVERAGE
Evidence-Based Reading and Writing	565 - 680	640
Math	555 - 745	655
<b>TOTAL</b>	<b>1120 - 1440</b>	<b>1290</b>

### ACT RESULTS (6 STUDENTS TESTED)

SECTION	MIDDLE 50%	AVERAGE
English	27 - 31	28.7
Math	28 - 35	31.8
Reading	23 - 26	25.5
Science	24 - 31	26.8
Composite	26 - 30	28.2

## MAY 2018 IB SCORE DISTRIBUTION

SCORE	1	2	3	4	5	6	7	TOTAL
<u>Group 1</u> A Language	0	0	1	15	47	29	8	110
<u>Group 2</u> B Language	0	0	0	21	37	36	6	100
<u>Group 3</u> Social Sciences	0	0	8	32	49	42	8	139
<u>Group 4</u> Science	0	8	22	27	40	25	12	134
<u>Group 5</u> Math	0	2	10	23	32	20	10	97
<u>Group 6</u> Arts	0	0	0	3	9	8	5	25



## UNITED STATES OF AMERICA

American Academy of Dramatic Arts  
 \*American University  
 \*University of Arizona  
 Azusa Pacific University  
 Bentley University  
 Berkeley College of Music  
 Binghamton University  
 Biola University  
 Boston College  
 \*Boston University  
 Brown University  
 University at Buffalo, The State  
 University of New York  
 California Lutheran University  
 California Polytechnic State University,  
 San Luis Obispo  
 \*University of California, Berkeley  
 \*University of California, Davis  
 \*University of California, Irvine  
 \*University of California, Los Angeles  
 University of California, Merced  
 \*University of California, Riverside  
 University of California, San Bernardino  
 University of California, San Diego  
 University of California, Santa Barbara  
 University of California, Santa Cruz  
 \*Case Western Reserve University  
 Central Michigan University  
 \*Chapman University  
 University of Chicago  
 University of Cincinnati  
 Clark University  
 Clarkson University  
 Coastal Carolina University  
 Colgate University  
 \*College of William and Mary  
 University of Colorado at Boulder  
 University of Colorado at  
 Colorado Springs  
 University of Colorado at Denver  
 Colorado Mesa University  
 Colorado State University  
 \*Columbia College Chicago  
 \*Columbia University  
 Concord University  
 \*Creighton University  
 \*The Culinary Institute of America  
 Dartmouth College  
 University of Denver  
 DePaul University  
 \*Dickinson University  
 Drexel University  
 \*Emerson College  
 Emily Carr University of Art and Design  
 University of Florida  
 \*Fordham University  
 The George Washington University  
 \*Georgia Military College  
 University of Georgia  
 Georgia State University  
 \*Gonzaga University  
 Gordon College  
 Goucher College  
 Grinnell University  
 University of Hartford  
 \*University of Hawaii at Manoa  
 Hawaii Pacific University  
 Hofstra University  
 College of the Holy Cross  
 \*Hult International Business School

University of Illinois at Chicago  
 \*University of Illinois at Urbana-Champaign  
 Indiana University Bloomington  
 The University of Iowa  
 Iowa State University  
 Ithaca College  
 James Madison University  
 Johnson & Wales University  
 Lehigh University  
 \*Loyola University Chicago  
 \*Loyola Marymount University  
 \*Lynn University  
 \*Manhattan College  
 University of Maryland, College Park  
 Marymount California University  
 University of Massachusetts, Amherst  
 \*University of Michigan  
 Michigan State University  
 University of Minnesota, Duluth  
 University of Minnesota, Twin Cities  
 Mitchell College  
 \*Moore College of Art and Design  
 \*Muhlenberg College  
 \*University of Nebraska at Lincoln  
 The College of New Jersey  
 \*The New School  
 \*New York University  
 Newbury College  
 \*Northeastern University  
 University of Notre Dame  
 Notre Dame de Namur University  
 Occidental College  
 \*Oral Roberts University  
 Oregon State University  
 Pace University, New York City  
 \*University of Pennsylvania  
 \*Pennsylvania State University  
 \*Pepperdine University  
 \*Pierce College  
 Point Loma Nazarene University  
 \*Pomona College  
 \*Pratt Institute  
 \*Purdue University  
 Rensselaer Polytechnic University  
 Rochester Institute of Technology  
 Rollins College  
 Rowan University  
 \*Rutgers University, New Brunswick  
 \*Saint Mary's College of California  
 \*University of San Diego  
 San Diego State University  
 \*University of San Francisco  
 \*Santa Clara University  
 Santa Fe College  
 \*Santa Rosa Junior College  
 Sarah Lawrence College  
 \*Savannah College of Art and Design  
 School of the Art Institute of Chicago  
 School of Visual Arts  
 Seattle University  
 Seton Hall University  
 Simmons College  
 \*University of South Dakota  
 Southern Methodist University  
 \*South Louisiana Community College  
 \*Stanford University  
 State University of New York at Albany  
 Stevens Institute of Technology  
 Stony Brook University  
 SUNY Buffalo State College

\*SUNY Maritime College  
 Susquehanna University  
 Syracuse University  
 Texas A&M University  
 \*Texas Christian University  
 The University of Texas at Austin  
 The University of Texas at San Antonio  
 \*Tufts University  
 Trinity University  
 \*Truman State University  
 University of Tulsa  
 University at Buffalo The State  
 University of New York  
 \*Vassar College  
 Villanova University  
 Virginia Tech  
 \*Wake Forest University  
 \*University of Washington  
 \*Wesleyan University  
 Westmont College  
 Whitworth University  
 Widener University  
 College of William and Mary  
 \*University of Wisconsin, Madison  
 Worcester Polytechnic Institute  
 Xavier University

University of Westminster  
 University of Winchester  
 \*Xian Jiaotong – Liverpool University

## CANADA

Acadia University  
 University of Alberta  
 Albertay University  
 Alexander College  
 British Columbia Institute of Technology  
 \*University of British Columbia  
 \*University of British Columbia  
 – Okanagan Campus  
 Concordia University Montreal  
 \*Dalhousie University  
 \*Langara College  
 \*McGill University  
 Memorial University of Newfoundland  
 Ontario College of Art and Design  
 Queen's University  
 Ryerson University  
 Simon Fraser University  
 \*University of Toronto  
 University of Waterloo  
 \*University of Winnipeg

## PHILIPPINES

\*Ateneo de Manila University  
 De La Salle – Canlubang  
 \*De La Salle University  
 \*DLSU College of Saint Benilde  
 \*Enderun Colleges Inc.  
 \*Information and Communications  
 Technology Academy  
 \*University of the Philippines Diliman  
 \*San Beda College Alabang  
 University of Santo Tomas  
 Southville International Schools and Universities

## QATAR

\*Georgetown University School  
 of Foreign Service

## ASIA/PACIFIC

Chinese University of Hong Kong  
 \*City University of Hong Kong  
 \*Dhirubhai Ambani Institute of Information  
 and Communication Technology  
 The University of Hong Kong  
 The Hong Kong Polytechnic University  
 Hong Kong University of Science  
 and Technology  
 \*Hosei University  
 \*International Christian University  
 Korea Institute of Science and Technology  
 Manipal Institute of Technology  
 Menlo College  
 \*Monash University  
 \*Nanyang Technological University  
 \*Ritsumeikan Asia Pacific University  
 \*Savannah College of Art and  
 Design – Hong Kong  
 \*Seoul National University  
 Sophia University  
 University of Sydney  
 \*Waseda University  
 \*Waseda University School of  
 International Liberal Studies

\*indicates matriculation

## ACCREDITATIONS AND AFFILIATIONS

- Western Association of Schools and Colleges (WASC)
- International Baccalaureate (IB)
- East Asia Regional Council of Schools (EARCOS)
- The Association for Advancement  
 of International Education (AAIE)
- National Honor Society (NHS)
- Department of Education (DepEd)
- International Association for College  
 Admission Counseling (IACAC)
- Asia Pacific Activities Conference (APAC)
- National Association for College Admission  
 Counseling (NACAC)
- Episcopal Church in the Philippines
- Bureau of Immigration and Deportation (BID)