



BRENT INTERNATIONAL SCHOOL MANILA

UPPER SCHOOL PROFILE 2018-2019

LEADERSHIPS

Mr. Jason J. Atkins
Headmaster
jatkins@brent.edu.ph

Ms. Sonia Bustamante
Upper School Principal
sbustamante@brent.edu.ph

Mr. Todd Wyks
Assistant Upper School Principal
twyks@brent.edu.ph

Ms. Maria Cristina R. Pozon
International Baccalaureate Program Coordinator
kpozon@brent.edu.ph

COUNSELORS

Ms. Genevieve Dubroof (Gr. 9-10)
gdubroof@brent.edu.ph

Mrs. Katelyn Regan (Gr. 11-12 A-K)
kregan@brent.edu.ph

Mrs. Yuko Spachuk (Gr. 11-12 L-Z)
yspachuk@brent.edu.ph



COLLEGE BOARD CODE: 705450
IB SCHOOL CODE: 000432

ADDRESS:

Brentville Subdivision,
Barangay Mamplasan,
Biñan, Laguna 4024,
Philippines

TELEPHONE:

+63(49) 5134330 to 33
+63(2) 779-5140
Ext. 311 & 312
Fax: +63(49) 513-4356

WEBSITE:

www.brent.edu.ph

AT A GLANCE

- 100+ years of Brent Pride
- International Baccalaureate (IB) Diploma
- American-based curriculum
- 40+ nationalities of students
- Nursery to Grade 12
- Matriculation to excellent universities
- 1,000 enrolled students
- Episcopal / Anglican traditions
- 100+ after-school activities
- Clean air in Biñan, Laguna
- Student-centered, caring community

MISSION STATEMENT

"Brent schools, in a Christian ecumenical environment in the Philippines, are committed to develop individual students as responsible global citizens and leaders in their respective communities, with a multicultural and international perspective, and equipped for entry to colleges and universities throughout the world."

HISTORY

- Founded in 1984
- An international, co-educational, day school
- Affiliated with the Episcopal Church of the Philippines

EXPECTED SCHOOL-WIDE LEARNING RESULTS (ESLRs)

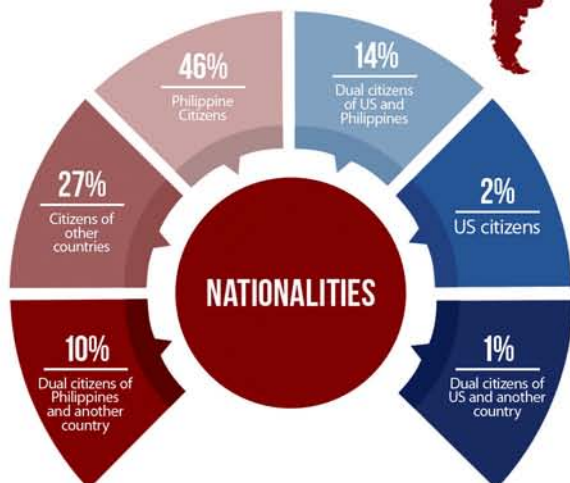
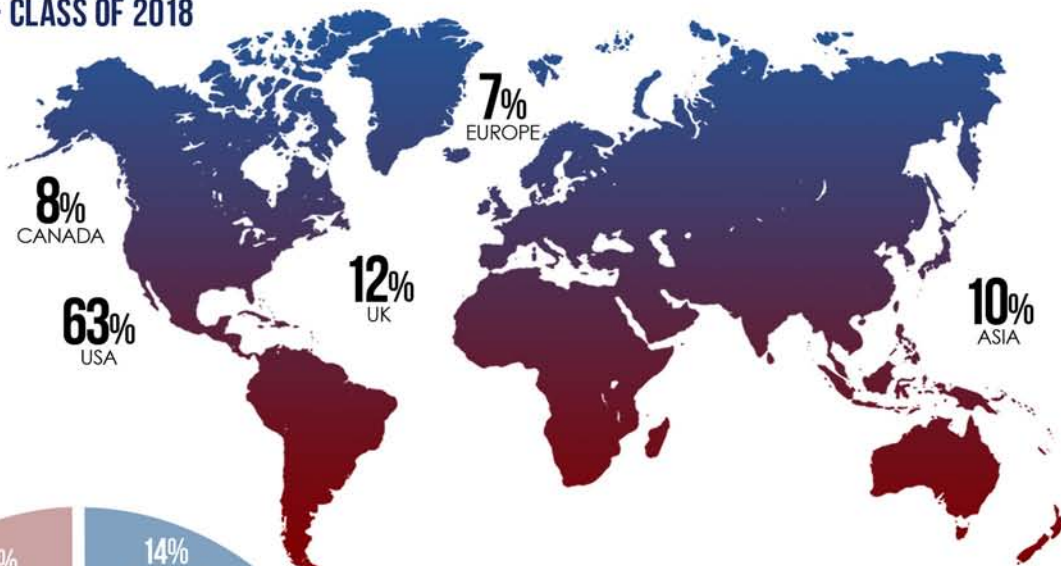
are foundational concepts of the established Brent curriculum and are embedded into each subject at every grade level.

- Responsible citizens • Critical thinkers
- Technologically literate • Healthy individuals
- Tolerant individuals
- Effective communicators • Life-long learners

SCHOOL CALENDAR

The school year has two semesters with a total of 180 school days. We have an eight-period rotating block schedule where four periods meet each day for 85 minutes.

MATRICULATION - CLASS OF 2018



ENTIRE SCHOOL

1033 students from nursery through grade 12
42 nationalities school-wide

HIGH SCHOOL

408 high school students
27 nationalities in high school
43 high school teaching professionals

CLASS OF 2019

116 students in the senior class
15 nationalities

UPPER SCHOOL

COURSE OFFERINGS

(Grades 9 - 12)

GRADE 9 CURRICULUM

CORE SUBJECTS

English	English 9
Mathematics	Geometry or Advanced Geometry
Science	Life Science (Biology) and the Environment
Social Science	History (semester), and Physical Geography (semester)

LANGUAGE OPTIONS (students choose one Language)

Chinese	
French	
Spanish	
Filipino	(native speakers only)
Korean	(native speakers only)

VISUAL AND PERFORMING ARTS

Art (semester) and Music (semester), or
Foundations of Art (one year), or
Band (one year), or
Choir (one year), or
Strings (one year), or
Dance (one year)

COMPUTER AND RELIGIOUS STUDIES

Computer Studies (one semester) and
Religious Studies (one semester)

HEALTH AND PHYSICAL EDUCATION

(one year course)

GRADE 10 CURRICULUM

CORE SUBJECTS

English	Advanced Literature, Literature
Mathematics	Algebra 2 or Advanced Algebra 2
Science	Chemistry / Physics (semester) or Advanced Chemistry / Physics (semester)
Social Science	History (semester), and Human Geography (semester)

LANGUAGE OPTIONS

Chinese	(students choose one Language)
French	
Spanish	
Filipino	(native speakers only)
Korean	(native speakers only)

VISUAL AND PERFORMING ARTS

Art (semester) and Music (semester), or
Foundations of Art (one year), or
Band (one year), or
Choir (one year), or
Strings (one year), or
Dance (one year)

COMPUTER AND RELIGIOUS STUDIES

Computer Studies or
Computer Programming
(one semester) and
Religious Studies (one semester)

HEALTH AND PHYSICAL EDUCATION

(one year course)

GRADE 11 AND 12 CURRICULUM

All students in Grades 11 and 12 take at least six classes, one course from each of the groups listed. In addition, they take Junior Seminar in the first semester of Grade 11 and Theory of Knowledge (TOK) in the second semester of Grade 11 and first semester of Grade 12. They also are to participate in after school activities/clubs and community service outreach at least once a semester. Successful completion of these courses and requirements over the last two years of study qualifies a student for one of two different Brent School diplomas (Brent Diploma or Brent Honors Diploma).

Students take at least one course from each of the following groups

LANGUAGE A

IB English A Lit. (SL and HL)
IB English A Lang. Lit. (SL and HL)
IB Filipino A (SL and HL)
IB Korean A (SL and HL)
English 11 and 12 (non-IB)

LANGUAGE B

IB Chinese Ab Initio SL
IB Chinese B (SL and HL)
IB French Ab Initio SL
IB French B (SL and HL)
IB Spanish B (SL and HL)
IB Spanish Ab Initio SL
Beginner French (non-IB)
Beginner Chinese (non-IB)
Beginner Spanish (non-IB)

SOCIAL SCIENCE

IB Business Management (SL and HL)
IB Economics (SL and HL)
IB Geography (SL and HL)
IB History (SL and HL)
IB Psychology (HL and SL)
IB Information Technology in a Global Society (SL and HL)
Business Management 11 and 12 (non-IB)
Economics 11 and 12 (non-IB)
Geography 11 and 12 (non-IB)
History 11 and 12 (non-IB)
Information Technology in a Global Society 11 and 12 (non-IB)
Psychology 11 and 12 (non-IB)
Economics/Business 11 and 12 (non-IB)

SCIENCE

IB Biology (SL and HL)
IB Chemistry (SL and HL)
IB Computer Science (SL and HL)
IB Physics (SL and HL)
IB Sports, Exercise, and Health Science (SL)
Biology 11 and 12 (non-IB)
Chemistry 11 and 12 (non-IB)
Computer Science 11 and 12 (non-IB)
Physics 11 and 12 (non-IB)
Sports, Exercise and Health Science 11 and 12 (non-IB)

MATHEMATICS

IB Mathematics HL
IB Mathematics SL
IB Mathematical Studies SL
Math 11 and 12 (non-IB)

ELECTIVES

IB Music (SL and HL)
IB Theater (SL and HL)
IB Visual Arts (SL and HL)
Or other IB courses
Another subject from groups 1-4
Visual Arts 11 and 12 (non-IB)
Theater 11 and 12 (non-IB)
Band (non-IB)
Choir (non-IB)
Strings (non-IB)

ACADEMICS

- Upper School curriculum prepares students for success in the International Baccalaureate Program
- The International Baccalaureate Program is available for all students in Grades 11 and 12
- Students rotate through a modified block schedule

US GRADUATION REQUIREMENTS

SUBJECT	CREDIT	
English	4	To complete the High School Program, students are also required to take Religious and Computer Studies, Art, Music, Health, Physical Education and participate in Community Service.
Mathematics	4	
Social Science	4	
Science	4	
Foreign Language	3-4	
Electives	2-3	
Health and Physical Education	1	
Theory of Knowledge	1	
TOTAL:	24	

GRADE POINT AVERAGE, GRADING SCALE AND RANKING

Brent does not provide the specific rank of our students. The cumulative GPA of our students reflects courses taken at Brent only and is reported on a weighted 4.00 scale. IB Higher Level courses are marked (HL) on transcripts and receive an additional weighting of .50.

A+ = 4.0	B+ = 3.3	C+ = 2.3	D+ = 1.3
A = 4.0	B = 3.0	C = 2.0	D = 1.0
A- = 3.7	B- = 2.7	C- = 1.7	D- = 0.7

GPA DISTRIBUTION

GPA RANGE	CLASS OF 2018
4.00+	10
3.50 - 3.99	42
3.00 - 3.49	33
2.50 - 2.99	24
2.00 - 2.49	8
1.00 - 1.99	0

HONORS AND AWARDS

Bishop Brent Scholar - 4.00 - above
Headmaster's List - 3.99 - 3.50
Honors List - 3.49 - 3.00

INTERNATIONAL BACCALAUREATE PROGRAM MAY 2018

Approximately **75%** of Brent students are enrolled in the IB diploma program

33
Brent Average

44
Brent Highest Score

92
IB Diploma Candidates

86
IB Diploma Earners

IB RESULTS SUMMARY (THE LAST FIVE YEARS)

CLASS YEAR	CLASS TOTAL	DIPLOMA CANDIDATES	DIPLOMA AWARDED	BRENT PASS RATE	IB PASS RATE	MEAN SCORES	HIGH	IB AVERAGE SCORES
2018	124	92	86	93%		29.78	44	33
2017	112	88	79	90%	79%	30	40	30
2016	93	64	52	80%	81%	30	40	30
2015	103	71	57	80%	81%	32	41	30
2014	95	75	66	88%	79%	32	44	30

SAT/ACT TESTING

REDESIGNED SAT RESULTS (56 STUDENTS TESTED)

SECTION	MIDDLE 50%	AVERAGE
Evidence-Based Reading and Writing	565 - 680	640
Math	555 - 745	655
TOTAL	1120 - 1440	1290

ACT RESULTS (6 STUDENTS TESTED)

SECTION	MIDDLE 50%	AVERAGE
English	27 - 31	28.7
Math	28 - 35	31.8
Reading	23 - 26	25.5
Science	24 - 31	26.8
Composite	26 - 30	28.2

MAY 2018 IB SCORE DISTRIBUTION

SCORE	1	2	3	4	5	6	7	TOTAL
<u>Group 1</u> A Language	0	0	1	15	47	29	8	110
<u>Group 2</u> B Language	0	0	0	21	37	36	6	100
<u>Group 3</u> Social Sciences	0	0	8	32	49	42	8	139
<u>Group 4</u> Science	0	8	22	27	40	25	12	134
<u>Group 5</u> Math	0	2	10	23	32	20	10	97
<u>Group 6</u> Arts	0	0	0	3	9	8	5	25

UNITED STATES OF AMERICA

American Academy of Dramatic Arts
 *American University
 *University of Arizona
 Azusa Pacific University
 Bentley University
 Berkeley College of Music
 Binghamton University
 Biola University
 Boston College
 *Boston University
 Brown University
 University at Buffalo, The State
 University of New York
 California Lutheran University
 California Polytechnic State University,
 San Luis Obispo
 *University of California, Berkeley
 *University of California, Davis
 *University of California, Irvine
 *University of California, Los Angeles
 University of California, Merced
 *University of California, Riverside
 University of California, San Bernardino
 University of California, San Diego
 University of California, Santa Barbara
 University of California, Santa Cruz
 *Case Western Reserve University
 Central Michigan University
 *Chapman University
 University of Chicago
 University of Cincinnati
 Clark University
 Clarkson University
 Coastal Carolina University
 Colgate University
 *College of William and Mary
 University of Colorado at Boulder
 University of Colorado at
 Colorado Springs
 University of Colorado at Denver
 Colorado Mesa University
 Colorado State University
 *Columbia College Chicago
 *Columbia University
 Concord University
 *Creighton University
 *The Culinary Institute of America
 Dartmouth College
 University of Denver
 DePaul University
 *Dickinson University
 Drexel University
 *Emerson College
 Emily Carr University of Art and Design
 University of Florida
 *Fordham University
 The George Washington University
 *Georgia Military College
 University of Georgia
 Georgia State University
 *Gonzaga University
 Gordon College
 Goucher College
 Grinnell University
 University of Hartford
 *University of Hawaii at Manoa
 Hawaii Pacific University
 Hofstra University
 College of the Holy Cross
 *Hult International Business School

University of Illinois at Chicago
 *University of Illinois at Urbana-Champaign
 Indiana University Bloomington
 The University of Iowa
 Iowa State University
 Ithaca College
 James Madison University
 Johnson & Wales University
 Lehigh University
 *Loyola University Chicago
 *Loyola Marymount University
 *Lynn University
 *Manhattan College
 University of Maryland, College Park
 Marymount California University
 University of Massachusetts, Amherst
 *University of Michigan
 Michigan State University
 University of Minnesota, Duluth
 University of Minnesota, Twin Cities
 Mitchell College
 *Moore College of Art and Design
 *Muhlenberg College
 *University of Nebraska at Lincoln
 The College of New Jersey
 *The New School
 *New York University
 Newbury College
 *Northeastern University
 University of Notre Dame
 Notre Dame de Namur University
 Occidental College
 *Oral Roberts University
 Oregon State University
 Pace University, New York City
 *University of Pennsylvania
 *Pennsylvania State University
 *Pepperdine University
 *Pierce College
 Point Loma Nazarene University
 *Pomona College
 *Pratt Institute
 *Purdue University
 Rensselaer Polytechnic University
 Rochester Institute of Technology
 Rollins College
 Rowan University
 *Rutgers University, New Brunswick
 *Saint Mary's College of California
 *University of San Diego
 San Diego State University
 *University of San Francisco
 *Santa Clara University
 Santa Fe College
 *Santa Rosa Junior College
 Sarah Lawrence College
 *Savannah College of Art and Design
 School of the Art Institute of Chicago
 School of Visual Arts
 Seattle University
 Seton Hall University
 Simmons College
 *University of South Dakota
 Southern Methodist University
 *South Louisiana Community College
 *Stanford University
 State University of New York at Albany
 Stevens Institute of Technology
 Stony Brook University
 SUNY Buffalo State College

*SUNY Maritime College
 Susquehanna University
 Syracuse University
 Texas A&M University
 *Texas Christian University
 The University of Texas at Austin
 The University of Texas at San Antonio
 *Tufts University
 Trinity University
 *Truman State University
 University of Tulsa
 University at Buffalo The State
 University of New York
 *Vassar College
 Villanova University
 Virginia Tech
 *Wake Forest University
 *University of Washington
 *Wesleyan University
 Westmont College
 Whitworth University
 Widener University
 College of William and Mary
 *University of Wisconsin, Madison
 Worcester Polytechnic Institute
 Xavier University

University of Westminster
 University of Winchester
 *Xian Jiaotong – Liverpool University

CANADA

Acadia University
 University of Alberta
 Albertay University
 Alexander College
 British Columbia Institute of Technology
 *University of British Columbia
 *University of British Columbia
 – Okanagan Campus
 Concordia University Montreal
 *Dalhousie University
 *Langara College
 *McGill University
 Memorial University of Newfoundland
 Ontario College of Art and Design
 Queen's University
 Ryerson University
 Simon Fraser University
 *University of Toronto
 University of Waterloo
 *University of Winnipeg

PHILIPPINES

*Ateneo de Manila University
 De La Salle – Canlubang
 *De La Salle University
 *DLSU College of Saint Benilde
 *Enderun Colleges Inc.
 *Information and Communications
 Technology Academy
 *University of the Philippines Diliman
 *San Beda College Alabang
 University of Santo Tomas
 Southville International Schools and Universities

QATAR

*Georgetown University School
 of Foreign Service

ASIA/PACIFIC

Chinese University of Hong Kong
 *City University of Hong Kong
 *Dhirubhai Ambani Institute of Information
 and Communication Technology
 The University of Hong Kong
 The Hong Kong Polytechnic University
 Hong Kong University of Science
 and Technology
 *Hosei University
 *International Christian University
 Korea Institute of Science and Technology
 Manipal Institute of Technology
 Menlo College
 *Monash University
 *Nanyang Technological University
 *Ritsumeikan Asia Pacific University
 *Savannah College of Art and
 Design – Hong Kong
 *Seoul National University
 Sophia University
 University of Sydney
 *Waseda University
 *Waseda University School of
 International Liberal Studies

*indicates matriculation

ACCREDITATIONS AND AFFILIATIONS

- Western Association of Schools and Colleges (WASC)
- International Baccalaureate (IB)
- East Asia Regional Council of Schools (EARCOS)
- The Association for Advancement
 of International Education (AAIE)
- National Honor Society (NHS)
- Department of Education (DepEd)
- International Association for College
 Admission Counseling (IACAC)
- Asia Pacific Activities Conference (APAC)
- National Association for College Admission
 Counseling (NACAC)
- Episcopal Church in the Philippines
- Bureau of Immigration and Deportation (BID)